



Learn more about your gas pipelines and how we're working to keep you safe.

America's pipeline network is used every day to transport products such as natural gas to homes, businesses and industrial facilities. According to statistics from the National Transportation Safety Board, pipelines are among the safest, most economical methods of transporting energy.

CenterPoint Energy is committed to the safe operation of our natural gas facilities in your community. We monitor the operations of our pipelines from our control centers 24 hours a day, seven days a week. Our natural gas facilities are designed, installed, tested, operated and maintained in accordance with all applicable federal and state requirements. Because safety is so important to us, we're dedicated to maintaining a robust pipeline safety program that includes routine inspections, corrosion protection, maintenance and testing programs, employee training and public education. 260304-01



**SAFETY IS IN YOUR HANDS.
EVERY DIG. EVERY TIME.**

Don't make a dig mistake!

For your safety, state law requires you to contact the **FREE "Call Before You Dig"** service at least two working days before you dig. Taking the time to have underground utilities marked protects your safety by preventing serious accidents, injury or even death. It also helps prevent disruption of services and possible delay of your project. For more information, visit Call811.com.

Recognize a gas leak.

In its most pure state, natural gas has no odor. That's why CenterPoint Energy adds a chemical with a very distinctive odor which smells like rotten eggs or sulfur to its natural gas before its delivered to its customers. Natural gas is lighter than air and may rise or travel through soil, even losing its odor.



260304-02

Know what to do if you smell gas.

Follow these safety tips:

- Leave immediately on foot and go to a safe location.
- Do not use any phone (cell or landline) near the suspected gas leak.
- Do not turn any lights, appliances or any electrical sources on or off.
- Avoid anything with an open flame or that may create a spark.
- Do not open or close windows.
- Do not start a vehicle if it's parked in a garage that's attached to the home/business of the suspected leak nor utilize an automatic garage door opener upon exiting.
- Call CenterPoint Energy at **800-752-8036 or 911** from somewhere other than the location of the gas leak and remain in a safe area until emergency personnel arrive.

For more information, visit
CenterPointEnergy.com/PipelineSafety.



260304-05 HO

For a hard copy or additional information about these messages, call the customer service telephone number on the front of your bill.



Obtén más información sobre tus tuberías de gas y cómo trabajamos para mantenerte seguro.

La red de tuberías de los Estados Unidos es utilizada todos los días para transportar productos tales como el gas natural a hogares, negocios y centros industriales. De acuerdo con las estadísticas del Consejo Nacional de Seguridad en el Transporte, las tuberías son uno de los métodos más seguros y económicos para transportar energía.

CenterPoint Energy se ha comprometido a ofrecer una operación segura de nuestras tuberías de gas natural en tu comunidad.

Monitoreamos las operaciones de nuestras tuberías desde nuestros centros de control las 24 horas del día,

los siete días de la semana. Nuestras instalaciones de gas natural son diseñadas, instaladas, probadas, operadas y mantenidas de acuerdo con todos los requisitos federales y estatales aplicables. Porque la seguridad es tan importante para nosotros, nos dedicamos a mantener un programa exhaustivo de seguridad de tuberías que incluye inspecciones de rutina, protección contra la corrosión, actividades de mantenimiento y de pruebas, capacitación de empleados y educación del público.

¡Evita errores al excavar!

Para tu seguridad, la ley estatal exige que te comuniques con el servicio **GRATUITO** de "Llama antes de excavar" al menos dos días hábiles antes de comenzar tu excavación. Al tomarte el tiempo para marcar los servicios públicos subterráneos protegerás tu seguridad previniendo accidentes graves, lesiones o incluso la muerte. También evita la interrupción de servicios y posibles retrasos en tu proyecto. Para más información, visita Call811.com.



260304-06

Reconocer una fuga de gas.

En su estado más puro, el gas natural no tiene olor. Por eso, CenterPoint Energy le agrega un producto químico que tiene un olor muy característico a huevos en mal estado o azufre a su gas natural antes de que sea distribuido a los consumidores. El gas natural es más liviano que el aire y puede elevarse o moverse a través del suelo, lo que le hace perder su olor.



MIRA



ESCUCHA



HUELE

Sepa qué hacer si huele a gas.

Sigue estos consejos de seguridad:

- Salga inmediatamente a pie y vaya a un lugar seguro.
- No uses ningún teléfono (celular o fijo) cerca donde se sospecha que hay una fuga.
- No enciendas ni apagues luces, aparatos domésticos o fuentes de electricidad.
- Evita todo lo que tenga una llama abierta o que pueda producir chispas.
- No abras ni cierres ventanas.
- No pongas en marcha un vehículo que esté estacionado en un garaje conectado a la casa o negocio donde se sospecha que hay una fuga, y para salir no utilices el sistema de apertura automática de la puerta del garaje.
- Llama a CenterPoint a **888-876-5786 (Texas)**, **800-752-8036 (Houston)** o **911** desde un lugar que no sea el de la fuga de gas y quédate en un área segura hasta que llegue el personal de emergencia.

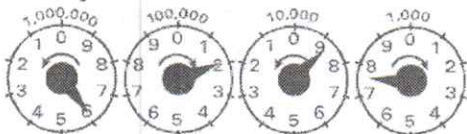
260304-07 TX

A safety message from CenterPoint Energy

If you smell natural gas, leave immediately. Call our Gas Leak Hotline at 800-296-9815. Do not use or store flammable products such as gasoline in the same room or area near the water heater or any other gas appliance.

Si percibes un olor a gas natural, sal inmediatamente. Llama a nuestra línea telefónica para fugas de gas a uno de los números de teléfono que aparecen arriba. No use ni almacene productos inflamables tales como gasolina en la misma habitación o en áreas cercanas a un calentador de agua u otro tipo de aparato a gas.

How to read your meter



The following is an example of how to read a typical meter index.

Look at the four dials with their curved arrows. Read from right to left as follows:

1. Read the "thousand-foot" dial as 7, the last number that the pointer passed. Note that the curved arrow on the dial shows a clockwise movement of the pointer.
2. Read the next dial, the "100-thousand" dial. The curved arrow on the dial above shows a

counterclockwise direction. The pointer is near the 9, but to be sure whether to read it as that number or the lower number 8, the previously mentioned "same or lower number rule" must be applied. Since the pointer in the "thousand-foot" dial to the right is nearer the 8 and the pointer has not reached the 0, the "100-thousand" dial should be read as 8.

3. Read the "100-thousand" dial, it seems to point to 2. Double-check by using the rule above. Since the pointer of the "100-thousand" dial is between 8 and 9, take the lower reading number, 1, for the "100-thousand" dial.

4. Read the left-most dial, the "million-foot" dial. The pointer is near the 6. Using the "same or lower number rule", we find the pointer on the dial to the right is between 1 and 2, so we read the "million-foot" dial exactly as the number it is on or near, 6.

The entire meter reading is 6187.